

Traffic Lights / LED Light / LED Traffic Light 890

LED Traffic Light 24VDC RD/GN



Part No.: 890.030.55

MECHANICAL DATA

| | |
|------------------------------|--------------------------------|
| Length | 154 mm |
| Height | 349 mm |
| Diameter | 150 mm |
| Materials | PC PC/ABS |
| Dome colour | Green Red |
| Housing colour | Grey |
| Protection category | IP65 |
| Connection | Push-in terminal |
| cross-sectional area minimum | 0,75mm ² / 19AWG |
| cross-sectional area maximum | 1,50mm ² / 16AWG |
| Cable entry | Screwed cable gland |
| Cable entry minimum | d = 5 mm |
| Cable entry maximum | d = 8 mm |
| Tension relief | Present (conforms to VDE) |
| Type of fixing | Base mounting Wall mounting |
| Working temperature minimum | -20°C |
| Working temperature maximum | +50°C |
| Weight with packaging | 1241 g |
| Product weight | 1109 g |

ELECTRICAL DATA

| | |
|-----------------------------|--------------------|
| Operating voltage | 24V |
| Operating voltage type | DC |
| Operating voltage tolerance | +/- 10% |
| Rated operational voltage | 24 VDC |
| Protection class | Protection class 2 |
| Pollution degree | 3 |

OPTICAL DATA

| | |
|----------------------|------------------|
| Light source | LED |
| Light colour | Green Red |
| Optical signal image | Permanent |
| Service life optical | 50,000 h maximum |

APPROVAL DATA

| | |
|------------------------------|--------------------------------|
| Conforms with CE | No |
| Conforms with RoHS directive | Fulfills substance restriction |



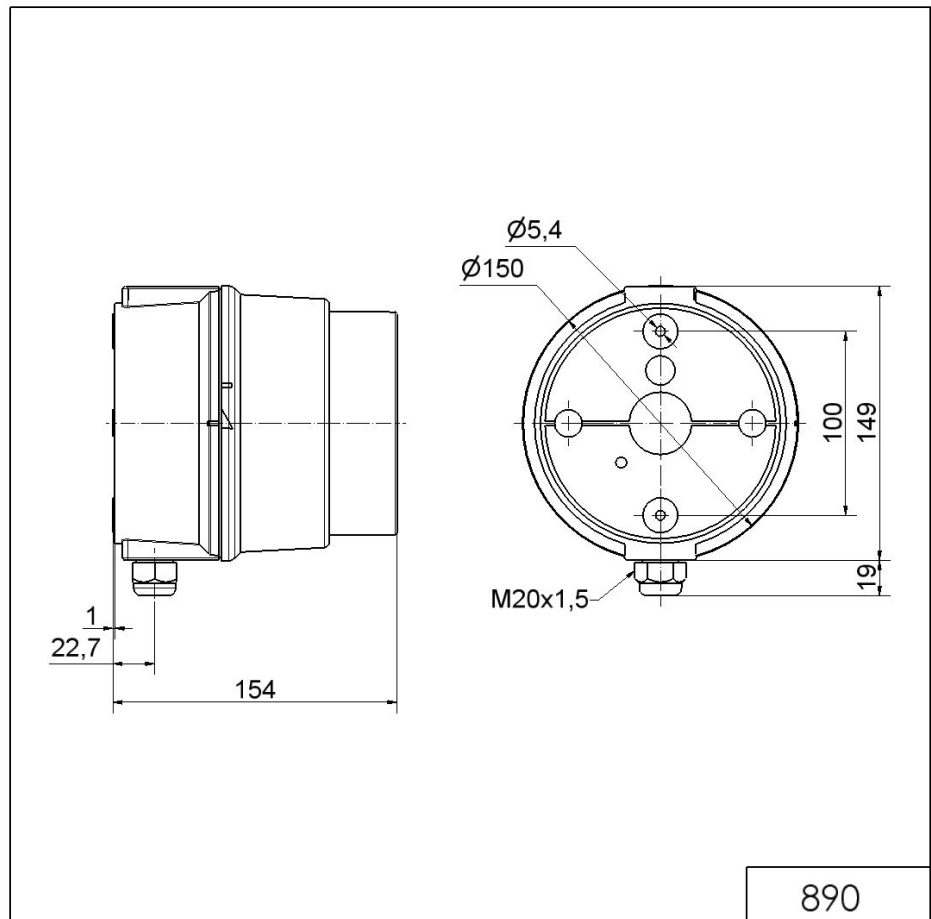
For additional installation and mounting information, refer to the appropriate user guide at www.werma.com. This printed copy is for information only and is subject to alteration.

Traffic Lights / LED Light / LED Traffic Light 890

LED Traffic Light 24VDC RD/GN

| | |
|------------------------------|-----|
| WEEE | Yes |
| Conforms with ATEX-directive | No |
| Conforms with CCC | No |
| Conforms with UL | No |
| Conforms with FCC | No |
| Conforms with IC | No |
| EAC certificate available | Yes |
| Conforms with AS-I | No |
| ICAO Certification | No |
| Conforms with DNV | No |
| Conforms with RoHS CN | No |
| Conforms with VdS | No |

DRAWING



For additional installation and mounting information, refer to the appropriate user guide at www.werma.com. This printed copy is for information only and is subject to alteration.