

KombiSIGN 40 / Accessories

Bracket assembly on profiling WM BK



Part No.: 960.630.02

MECHANICAL DATA

| | |
|-----------------------|---------------|
| Length | 70 mm |
| Width | 41 mm |
| Height | 57 mm |
| Materials | PC/ABS |
| Housing colour | Black |
| Protection category | IP66 IP69K |
| Cable entry minimum | d = 3 mm |
| Cable entry maximum | d = 6 mm |
| Weight with packaging | 27 g |
| Product weight | 27 g |

APPROVAL DATA

| | |
|-------------------------------|--------------------------------|
| Conforms with CE | No |
| Conforms with RoHS directive | Fulfills substance restriction |
| WEEE | No |
| Conforms with ATEX-directive | No |
| Conforms with CCC | No |
| Conforms with UL | No |
| Conforms with FCC | No |
| Conforms with IC | No |
| EAC certificate available | No |
| Conforms with UKCA (Importer) | No |
| Conforms with AS-I | No |
| ICAO Certification | No |
| Conforms with DNV | No |
| Conforms with RoHS CN | No |

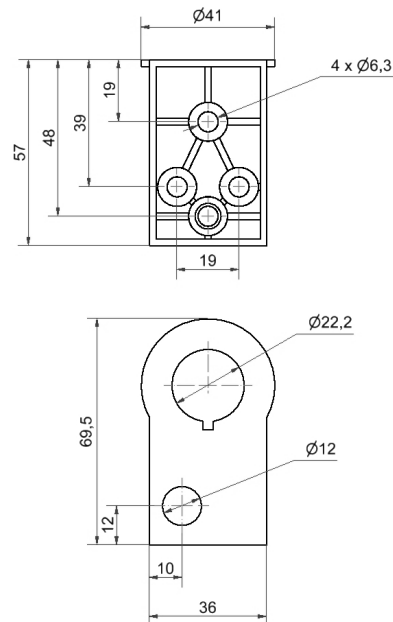


For additional installation and mounting information, refer to the appropriate user guide at www.werma.com. This printed copy is for information only and is subject to alteration.

KombiSIGN 40 / Accessories

Bracket assembly on profiling WM BK

DRAWING



For additional installation and mounting information, refer to the appropriate user guide at www.werma.com. This printed copy is for information only and is subject to alteration.